

**Botany Evolution LLC**  
 2510 Kirby Circle NE  
 Palm Bay, FL 32945  
 321-802-4583

# Certificate Of Analysis

**Sample Identification Information**

<u>Date of Analysis</u> 2/26/2020	<u>Country of Origin</u> VANUATU
<u>Sample:</u> S0840	<u>Country of Processing</u> VANUATU
<u>Product Name</u> TABOO	<u>Manufacture Date</u> 01/30/20
<u>Lot#</u> VFE200130T	<u>Best By Date</u> 01/30/23

**General Product Specifications**

<u>Product Species</u> Piper Methysticum	<u>Common Names</u> Kava kava, Awa, Yagona
<u>Part Used</u> Root	<u>Appearance</u> Yellow, beige powder

<u>Analyzed Characteristics</u>	<u>Specification</u>	<u>Result</u>	<u>Test Method</u>
<u>Standardization</u>	2-17% Kavalactones	10.78%	HPLC
<u>Identification</u>	Complies by HPLC	Conform	HPLC
<u>Kavalactone Profile</u>	Noble	PASS	HPLC
<u>Mesh Size</u>	60-30	60	Sieve
<u>Color</u>	Beige to Yellow	Pass	Visual
<u>Odor</u>		Pass	Organoleptic
<u>Taste</u>		Pass	Organoleptic
<u>Chemotype</u>		243156	HPLC
<u>K/DHM</u>		3.54	Calculation

Kavalactones	Code	Peaks Ref. (elution order)	Correction Factor	Area *	Area %	Corrected Kavalactones	Chemotype Identifier
Standard Kavain	K			2387.755			
Methysticin	M	1	2.21	719.306	7.23%	0.87%	6
Dihydromethysticin	DHM	2	3.38	506.09	5.09%	0.90%	5
Kavain	K	3	1	5794.465	58.27%	3.20%	4
Dihydrokavain	DHK	4	3.08	1467.096	14.75%	3.41%	2
Desmethoxyyangonin	DMY	5	2.52	631.468	6.35%	0.96%	1
Yangonin	Y	6	3.12	826.189	8.31%	1.44%	3
<b>Kavalactones</b>			<b>Total:</b>	<b>9944.614</b>	<b>100.00%</b>	<b>10.78%</b>	<b>243156</b>

\*See data in attachment HPLC1100 Agilent Certificate with Chromatogram graph.

This result are in house tested and the best of our knowledge and experience. Using calibrated equipment.

We are dedicated to offer the best Quality of Botanical products on the market. We test and stand behind our products.

Disclaimer\* the test results are accurate to the best of our knowledge and are based upon reputable laboratory and industry standard testing methods.

These results should not be used as a final determination for use in a finished product. It is recommended that you verify these test results with an in house quality control department or obtain an additional independent third party lab to verify that this material meets specifications

Botany Evolution, its board of directors, contract laboratories, employees, and affiliates are held harmless from any loss or damages resulting from the use or misuse of this document. The appropriate use of this product is the sole responsibility of the user of the purchasing party.

Chemist Mustie Youngs Date 2/27/20

SAMPLE S0840  
Vial 20

0.75538g/50ml

wavelength 246 nm

C:\CHEM32\1\DATA\KAVA\_2\_26\_20\_15MINSTDTESTMETHOD 2020-02-26 16-16-14\020- ->

SEQUENCE C:\CHEM32\1\DATA\KAVA\_2\_26\_20\_ ->

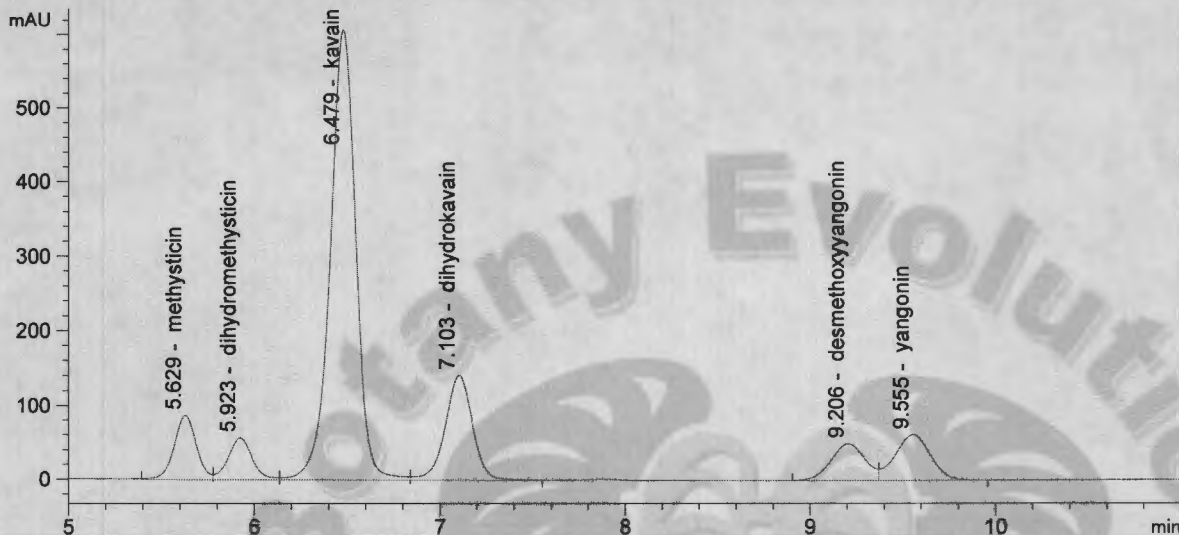
Injection date 2/26/2020

Injection time 10:28:10 PM

Acq. operator KRISTL

Method C:\CHEM32\1\DATA\KAVA\_2\_26\_20\_15MINSTDTESTMETH->

DAD1 C, Sig=246,10 Ref=500,60 (KAVA\_2\_26\_20\_15MINSTDTESTMETHOD 2020-02-26 16-16-14\020-2001.D)



#	COMPOUND	RET. TIME	AREA	AREA %	AMOUNT
1	methysticin	5.629	719.306	7.23	0.000
2	dihydromethysticin	5.923	506.090	5.09	0.000
3	kavain	6.479	5794.465	58.27	0.000
4	dihydrokavain	7.103	1467.096	14.75	0.000
5	desmethoxyyangonin	9.206	631.468	6.35	0.000
6	yangonin	9.555	826.189	8.31	0.000

*Handwritten signature/initials*