

Botany Evolution LLC

2510 Kirby Circle NE

Palm Bay, FL 32945

321-802-4583

Certificate Of Analysis**Sample Identification Information**Date of Analysis 6/26/2017Sample: S0125Product Name BLACK LABELLot# VFE170521BLCountry of Origin VANUATUCountry of Processing VANUATUManufacture Date 05/21/17Expiration Date 05/21/20**General Product Specifications**Product Species Piper MethysticumPart Used RootCommon Names Kava kava, Awa, YagonaAppearance Beige powder

<u>Analyzed Characteristics</u>	<u>Specification</u>	<u>Result</u>	<u>Test Method</u>
<u>Standardization</u>	2-15% Kavalactones	9.92%	HPLC
<u>Identification</u>	Complies by HPLC	Conform	HPLC
<u>Kavalactone Profile</u>	Noble	PASS	HPLC
<u>Mesh Size</u>	60-30	60	Sieve
<u>Color</u>	Beige to Yellow	Pass	Visual
<u>Odor</u>		Pass	Organoleptic
<u>Taste</u>		Pass	Organoleptic
<u>Chemotype</u>		423165	HPLC
<u>K/DHM</u>		4.15	Calculation

Kavalactones	Code	Peaks Ref.	Correction Factor	Area *	Area %	Corrected Kavalactones	Chemotype Identifier
Standard Kavain	K			2745.21			
Methysticin	M	1	2.19	683.526	6.98%	0.79%	6
Dihydromethysticin	DHM	2	3.23	436.424	4.45%	0.74%	5
Kavain	K	3	1	5848.425	59.70%	3.08%	4
Dihydrokavain	DHK	4	4.21	1361.863	13.90%	3.02%	2
Desmethoxyyangonin	Y	5	2.74	658.773	6.72%	0.95%	1
Yangonin	DMY	6	3.16	807.418	8.24%	1.34%	3
Kavalactones			Total:	9796.429	100.00%	9.92%	423165

*See data in attachment HPLC1100 Agilent Certificate with Chromatogram graph.

This result are in house tested and the best of our knowledge and experience. Using calibrated equipment.

We are dedicated to offer the best Quality of Botanical products on the market. We test and stand behind our products.

Disclaimer* the test results are accurate to the best of our knowledge and are based upon reputable laboratory and industry standard testing methods.

These results should not be used as a final determination for use in a finished product. It is recommended that you verify these test results with an in house quality control department or obtain an additional independent third party lab to verify that this material meets specifications

Botany Evolution, its board of directors, contract laboratories, employees, and affiliates are held harmless from any loss or damages resulting from the use or misuse of this document. The appropriate use of this product is the sole responsibility of the user of the purchasing party.

SAMPLE S0125
Vial 14

0.74075 g/50 ml

wavelength 246 nm

C:\CHEM32\1\DATA\KAVA_6_26_2017_15MINSTDTESTMETHOD 2017-06-26 15-51-33\014->

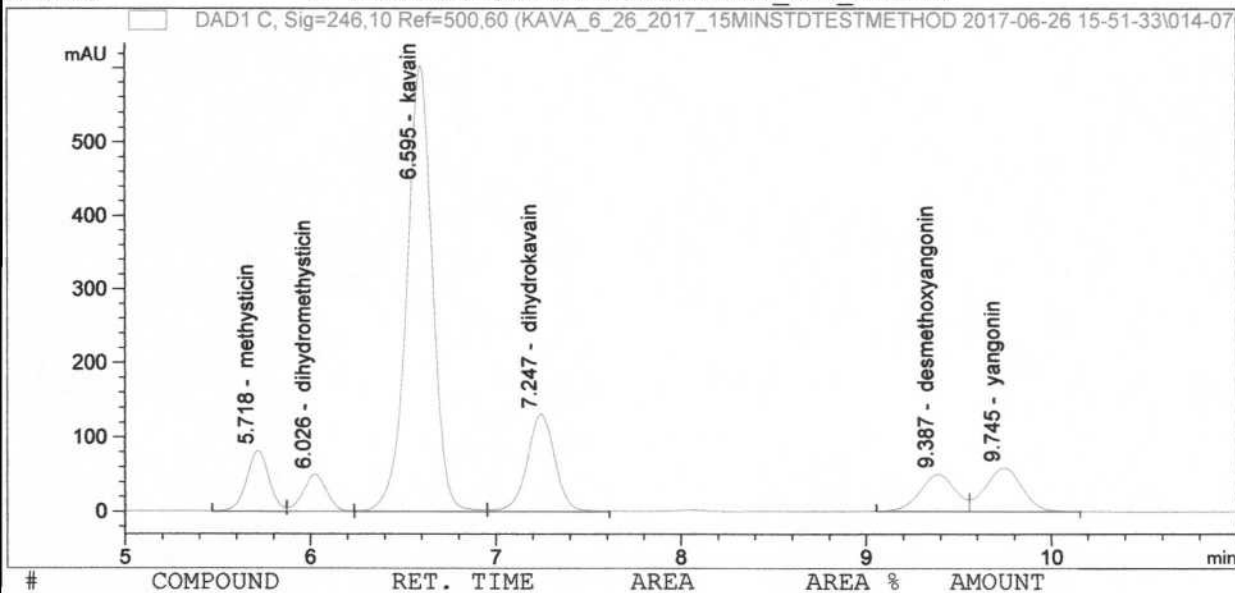
SEQUENCE C:\CHEM32\1\DATA\KAVA_6_26_2017_ ->

Injection date 6/26/2017

Injection time 6:17:34 PM

Acq. operator KRISTL

Method C:\CHEM32\1\METHODS\KAVA15MIN_STD_TEST.M



#	COMPOUND	RET. TIME	AREA	AREA %	AMOUNT
1	methysticin	5.718	683.526	6.98	0.000
2	dihydromethysticin	6.026	436.424	4.45	0.000
3	kavain	6.595	5848.425	59.70	0.000
4	dihydrokavain	7.247	1361.863	13.90	0.001
5	desmethoxyyangonin	9.387	658.773	6.72	0.000
6	yangonin	9.745	807.418	8.24	0.000