

**Botany Evolution LLC**

2510 Kirby Circle NE

Palm Bay, FL 32945

321-802-4583

**Certificate Of Analysis****Sample Identification Information**

<u>Date of Analysis</u>	5/30/2017	<u>Country of Origin</u>	VANUATU
<u>Sample:</u>	S0118	<u>Country of Processing</u>	VANUATU
<u>Product Name</u>	CEREMONIAL KAVA	<u>Manufacture Date</u>	03/16/17
<u>Lot#</u>	VFE170316C	<u>Expiration Date</u>	03/16/20

**General Product Specifications**

<u>Product Species</u>	Piper Methysticum	<u>Common Names</u>	Kava kava, Awa, Yagona
<u>Part Used</u>	Root	<u>Appearance</u>	Beige powder

<u>Analyzed Characteristics</u>	<u>Specification</u>	<u>Result</u>	<u>Test Method</u>
<u>Standardization</u>	2-15% Kavalactones	9.83%	HPLC
<u>Identification</u>	Complies by HPLC	Conform	HPLC
<u>Kavalactone Profile</u>	Noble	PASS	HPLC
<u>Mesh Size</u>	60-30	60	Sieve
<u>Color</u>	Beige to Yellow	Pass	Visual
<u>Odor</u>		Pass	Organoleptic
<u>Taste</u>		Pass	Organoleptic
<u>Chemotype</u>		243516	HPLC
<u>K/DHM</u>		2.95	Calculation

Kavalactones	Code	Peaks Ref.	Correction Factor	Area *	Area %	Corrected Kavalactones	Chemotype Identifier
Standard Kavain	K			2849			
Methysticin	M	1	2.19	765.16	7.65%	0.82%	6
Dihydromethysticin	DHM	2	3.23	592.892	5.93%	0.94%	5
Kavain	K	3	1	5640.164	56.41%	2.77%	4
Dihydrokavain	DHK	4	4.21	1510.218	15.10%	3.12%	2
Desmethoxyyangonin	Y	5	2.74	671.064	6.71%	0.90%	1
Yangonin	DMY	6	3.16	819.409	8.19%	1.27%	3
<b>Kavalactones</b>			<b>Total:</b>	<b>9998.907</b>	<b>100.00%</b>	<b>9.83%</b>	<b>243516</b>

\*See data in attachment HPLC1100 Agilent Certificate with Chromatogram graph.

This result are in house tested and the best of our knowledge and experience. Using calibrated equipment.

We are dedicated to offer the best Quality of Botanical products on the market. We test and stand behind our products.

Disclaimer\* the test results are accurate to the best of our knowledge and are based upon reputable laboratory and industry standard testing methods.

These results should not be used as a final determination for use in a finished product. It is recommended that you verify these test results with an in house quality control department or obtain an additional independent third party lab to verify that this material meets specifications

Botany Evolution, its board of directors, contract laboratories, employees, and affiliates are held harmless from any loss or damages resulting from the use or misuse of this document. The appropriate use of this product is the sole responsibility of the user of the purchasing party.

SAMPLE S0118  
 Vial 6

wt 0.76452g/ml

wavelength 246 nm

C:\CHEM32\1\DATA\KAVA\_5\_30\_2017\_15MINSTDTESTMETHOD 2017-05-30 13-53-15\006->

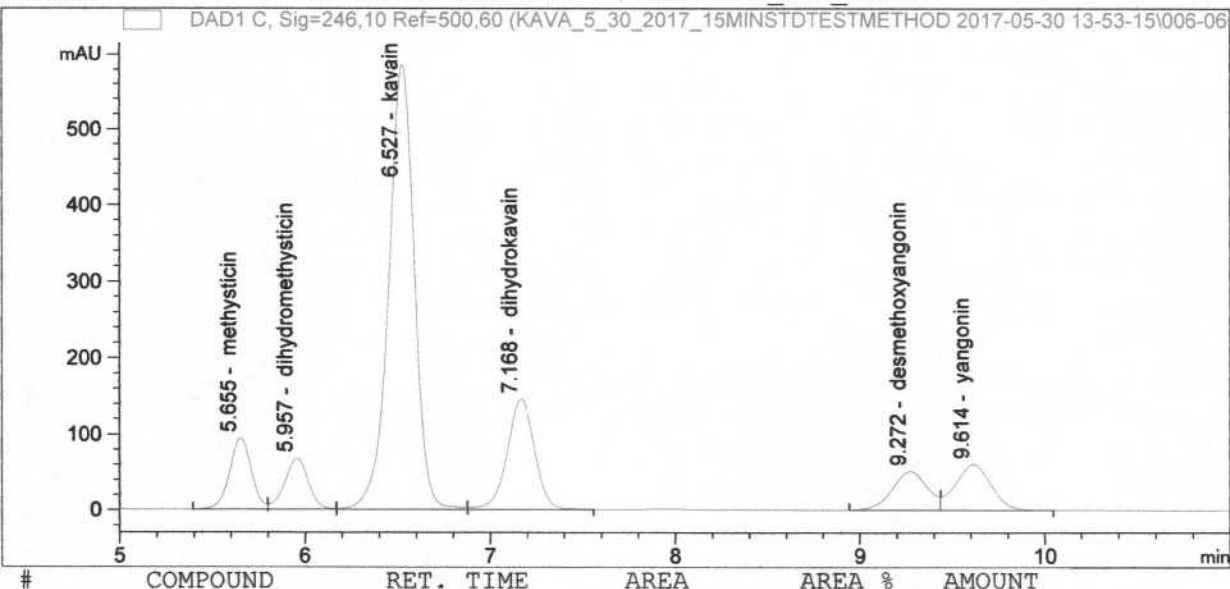
SEQUENCE C:\CHEM32\1\DATA\KAVA\_5\_30\_2017\_ ->

Injection date 5/30/2017

Injection time 3:46:40 PM

Acq. operator KRISTL

Method C:\CHEM32\1\METHODS\KAVA15MIN\_STD\_TEST.M



#	COMPOUND	RET. TIME	AREA	AREA %	AMOUNT
1	methysticin	5.655	765.160	7.65	0.000
2	dihydromethysticin	5.957	592.892	5.93	0.000
3	kavain	6.527	5640.164	56.41	0.000
4	dihydrokavain	7.168	1510.218	15.10	0.001
5	desmethoxyyangonin	9.272	671.064	6.71	0.000
6	yangonin	9.614	819.409	8.19	0.000